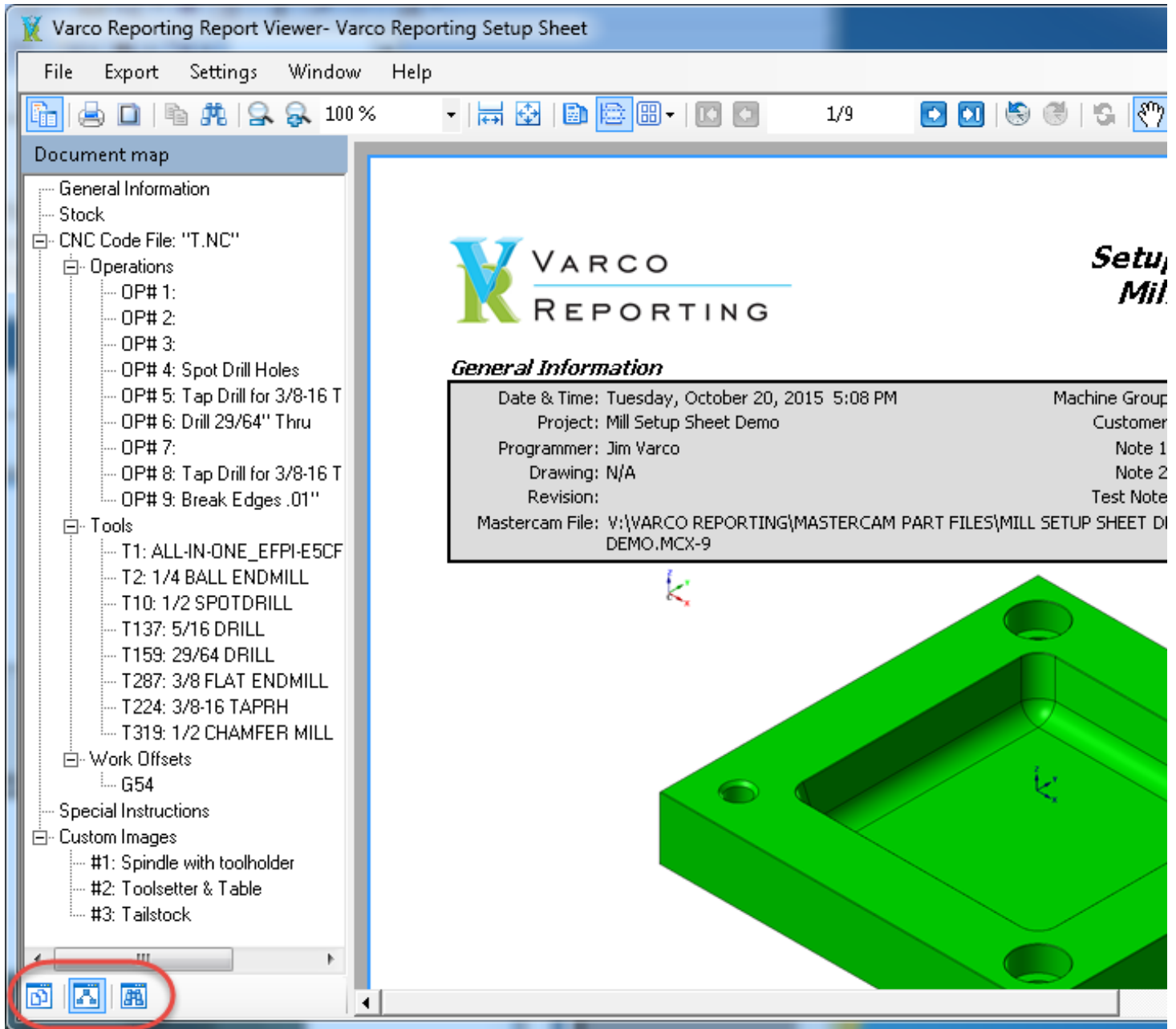
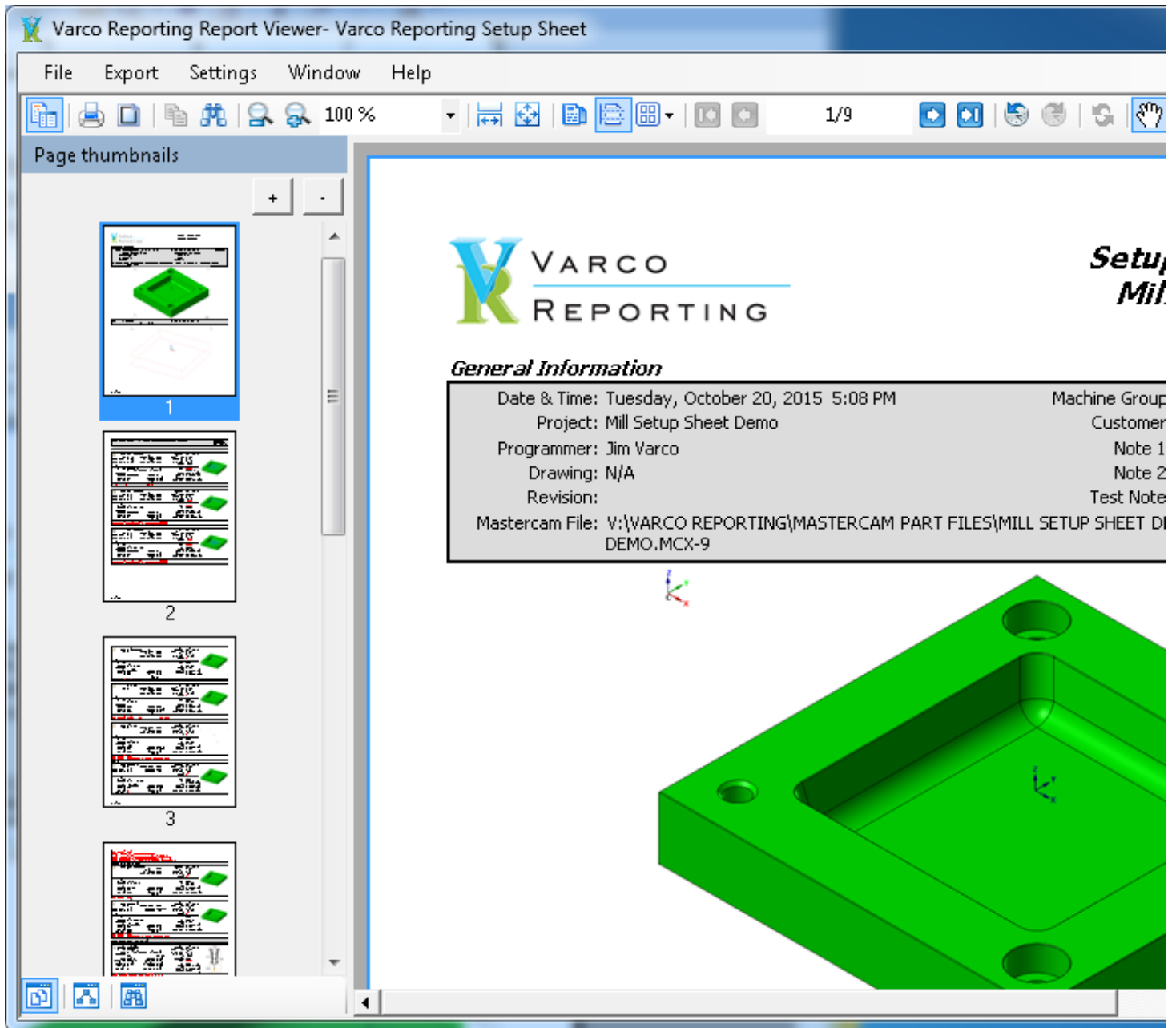


After the report is displayed in the Varco Reporting Viewer, options become available. Note the Bookmark list on the left that allows you to jump to anywhere in the report. Thumbnail views of each page is an alternative to the Bookmarks, selected using the buttons below the Bookmarks.

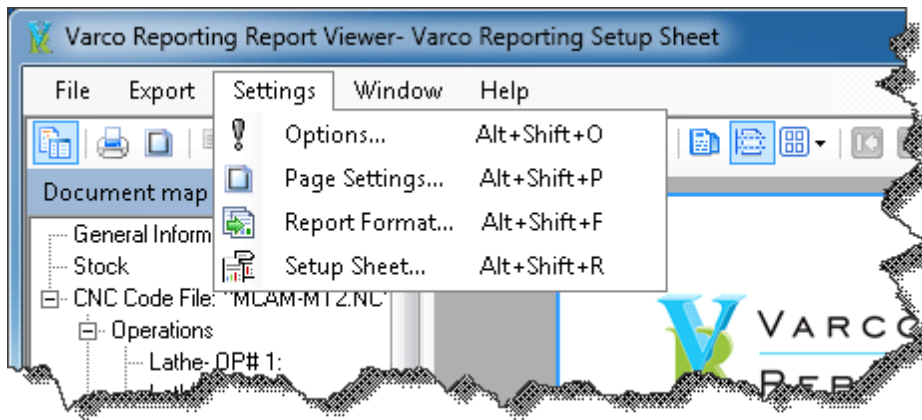


And using the Thumbnails:

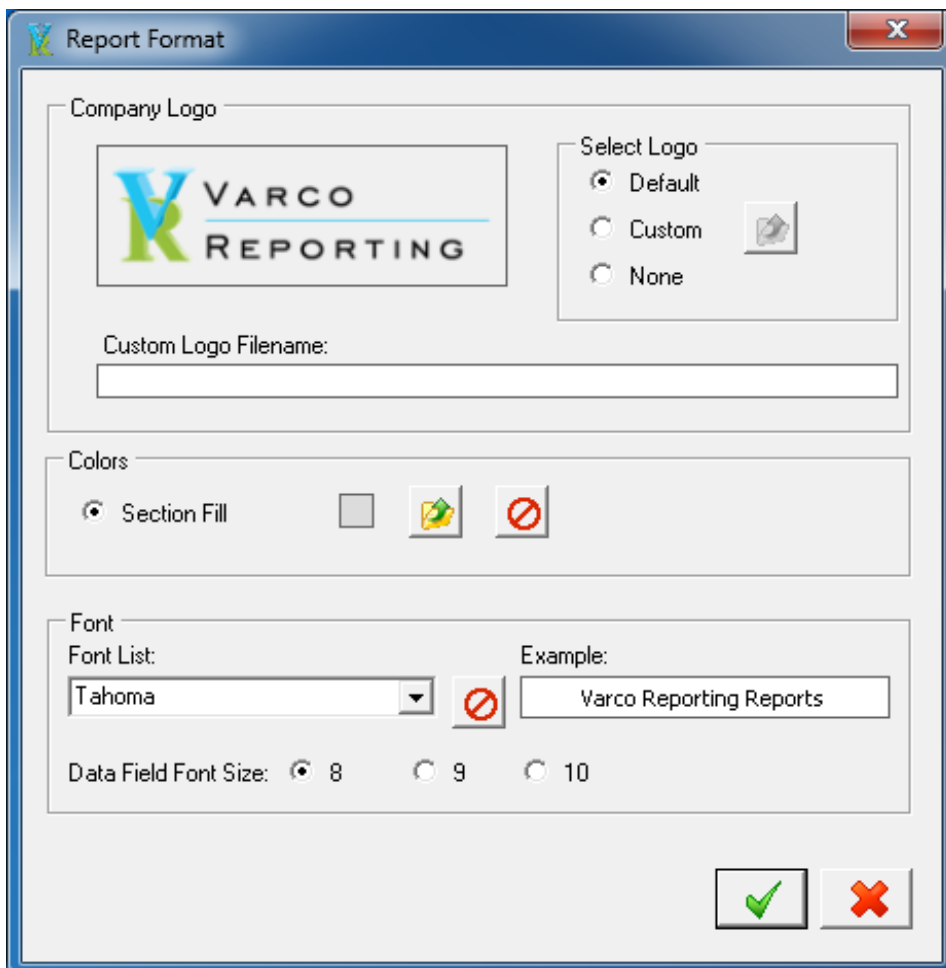


The following screenshots are from dialogs available from the Viewer Settings menu.

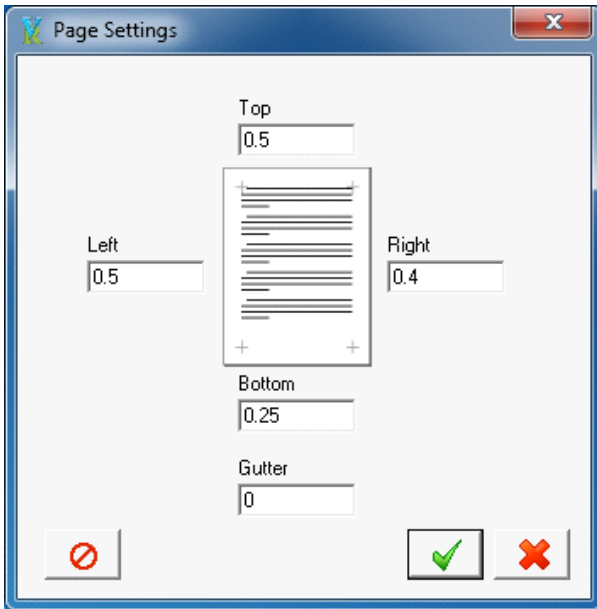
The last menu pick in the Settings Menu is settings for the specific report type, a Setup Sheet is shown in this example. If selected, a dialog is displayed that provide options to configure the report to display the way the user wants it to:



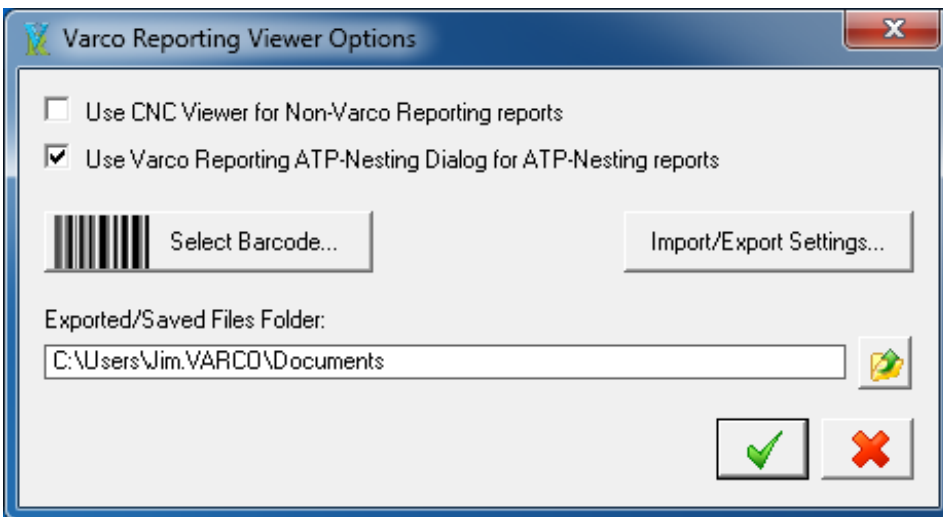
Another option on the "Settings" menu is "Report Format". Here is where the user can select a custom logo to display, or none at all. The report font style and size can be set to the users' preference, and a color can be set to shade portions of the report. These settings are saved and used for all reports:



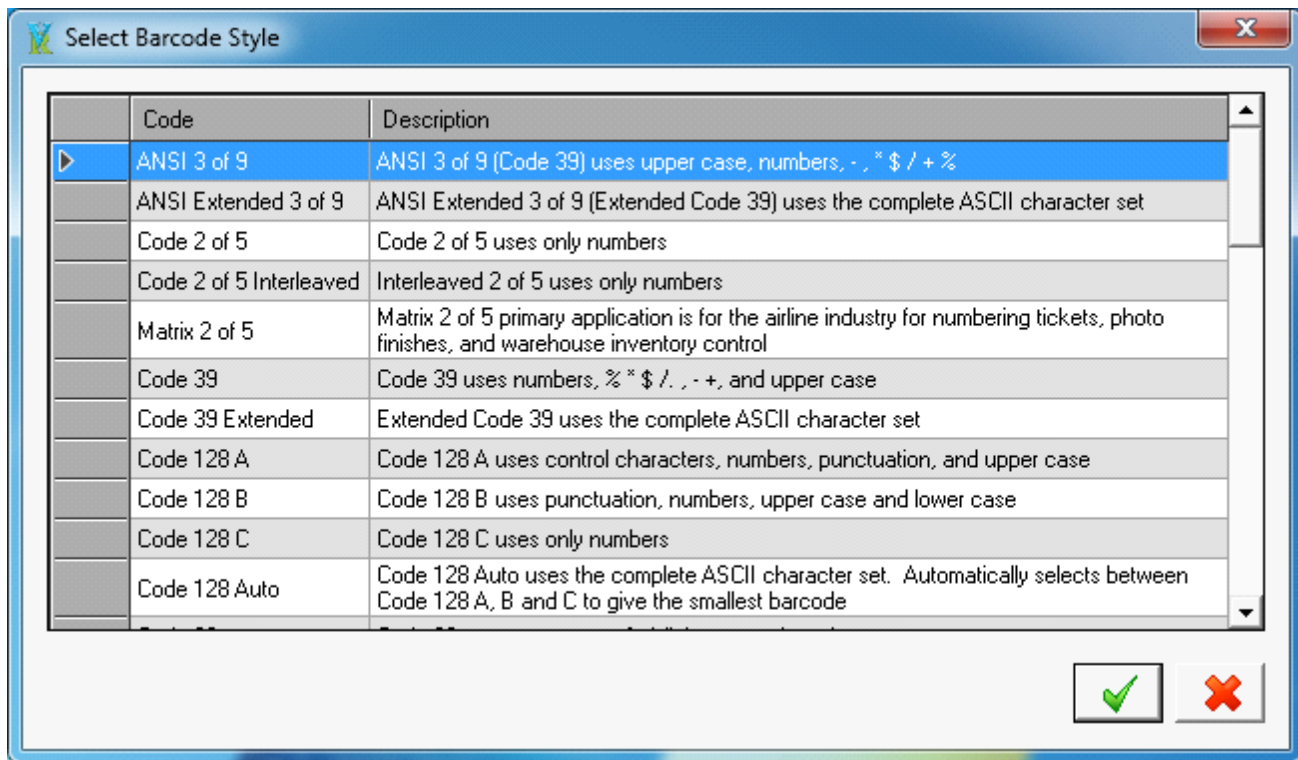
From the "Settings" menu the "Page Settings" dialog can be displayed for setting of page margins. These settings are saved for each report.



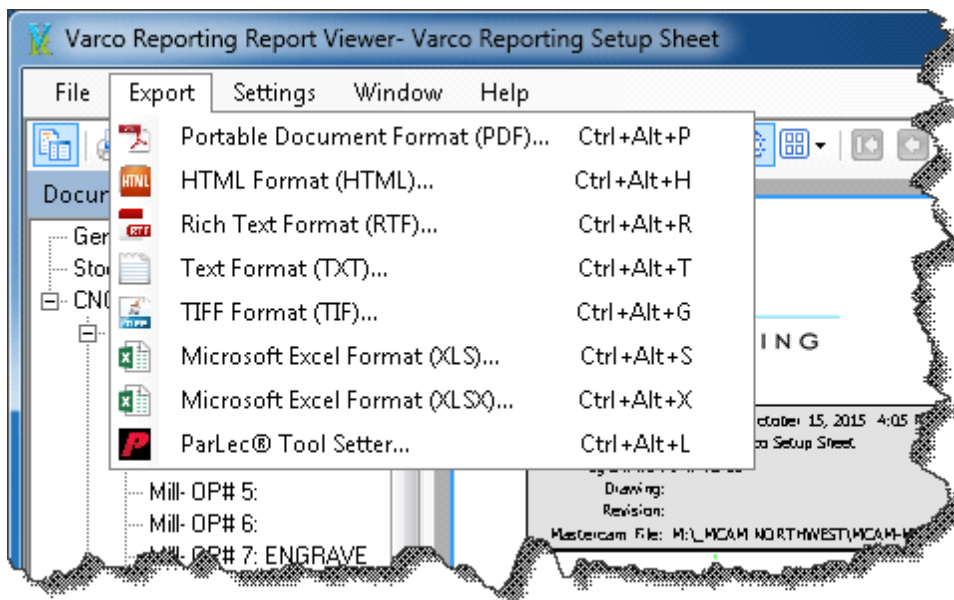
The "Options" dialog from the "Settings" menu allows the user to select the barcode format to use if barcodes are desired. For Nesting and ATP reports a simpler dialog can be displayed for selecting the report to use, or the normal "Run" dialog can be used. For reports that are not part of the Varco Reports package the user can choose to have them displayed in the original Viewer installed with Mastercam instead of the Varco Reporting Viewer. There is also an option to set a default folder for exported files to saved to:



Numerous barcode formats are available:



From the "Export" menu several options are available for exporting the reports, including to a ParLec tool setter (Mill or Router Setup Sheet):



Once any settings changes are made, the currently displayed report is refreshed using those settings.