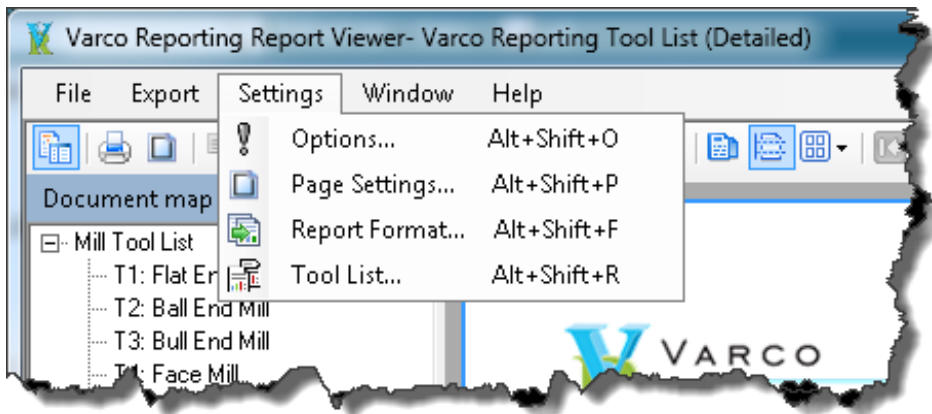


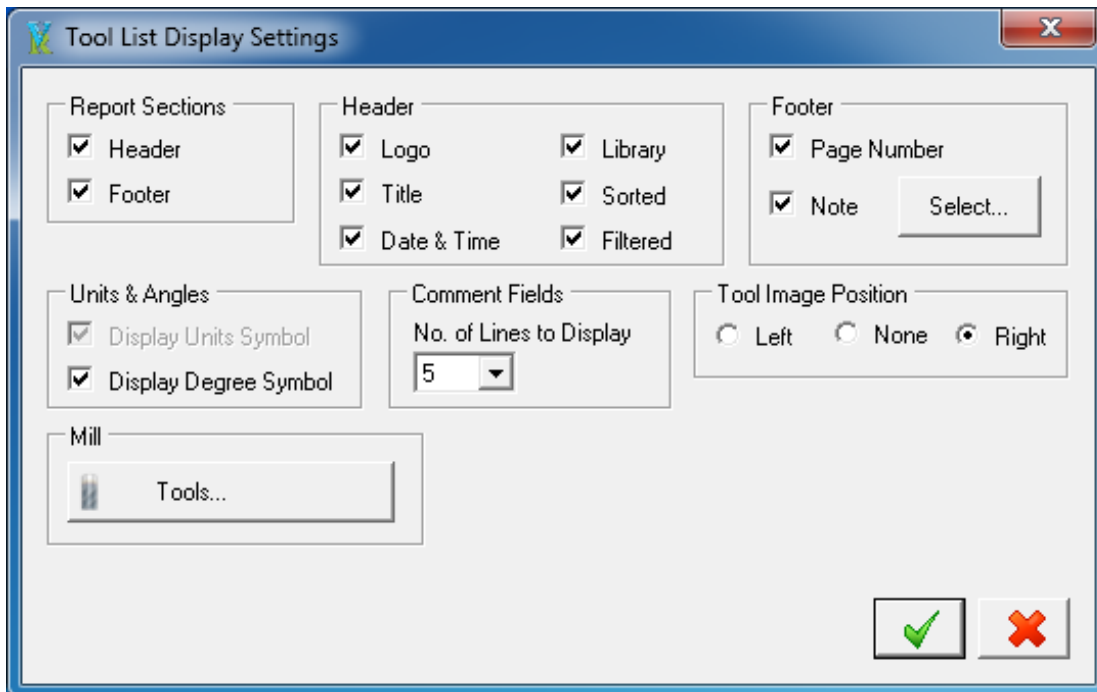
Select the "View / Download Options for All Reports" PDF for additional information.

The Detailed Tool List is launched exactly the same way as the Tool List reports installed with Mastercam, either from the Tool Manager or Operations Manager.

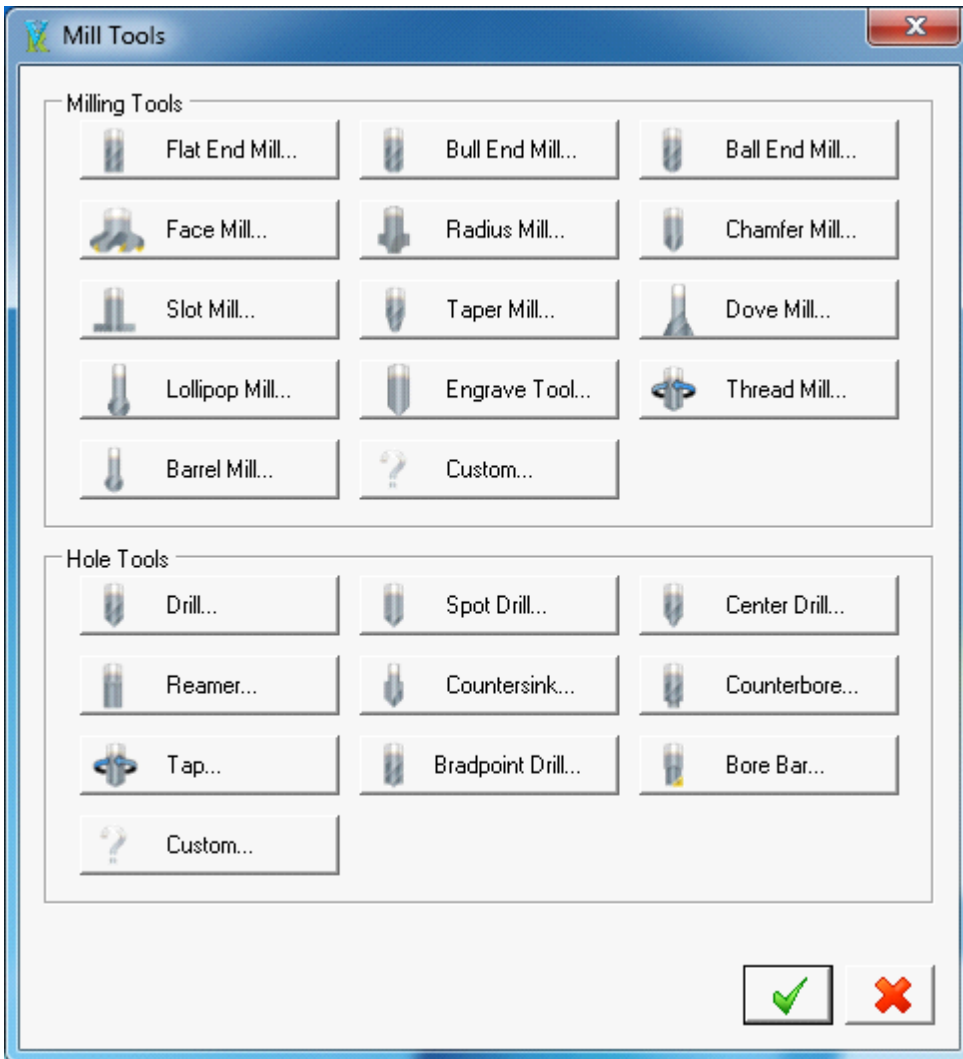
The following screenshots are from dialogs available from the Viewer Settings menu:



The "Tool List" dialog provides options to configure the report to display the way the user wants it to. Checkboxes allow the user to enable or disable all aspects of the displayed report. Options to limit the number of lines used by comment fields are available. The buttons on the lower part of the dialog for tools vary depending on the type of machine. Images can be set to display on the left, right, or not at all.




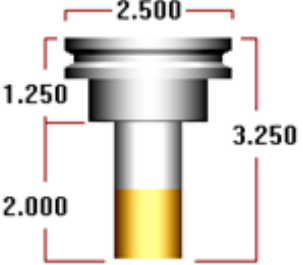
The following screenshot is of the dialog displayed if the “Tools...” button for Mill is clicked. Listed are all of the types of tools available. The list varies depending on the version of Mastercam, shown is for version X9:



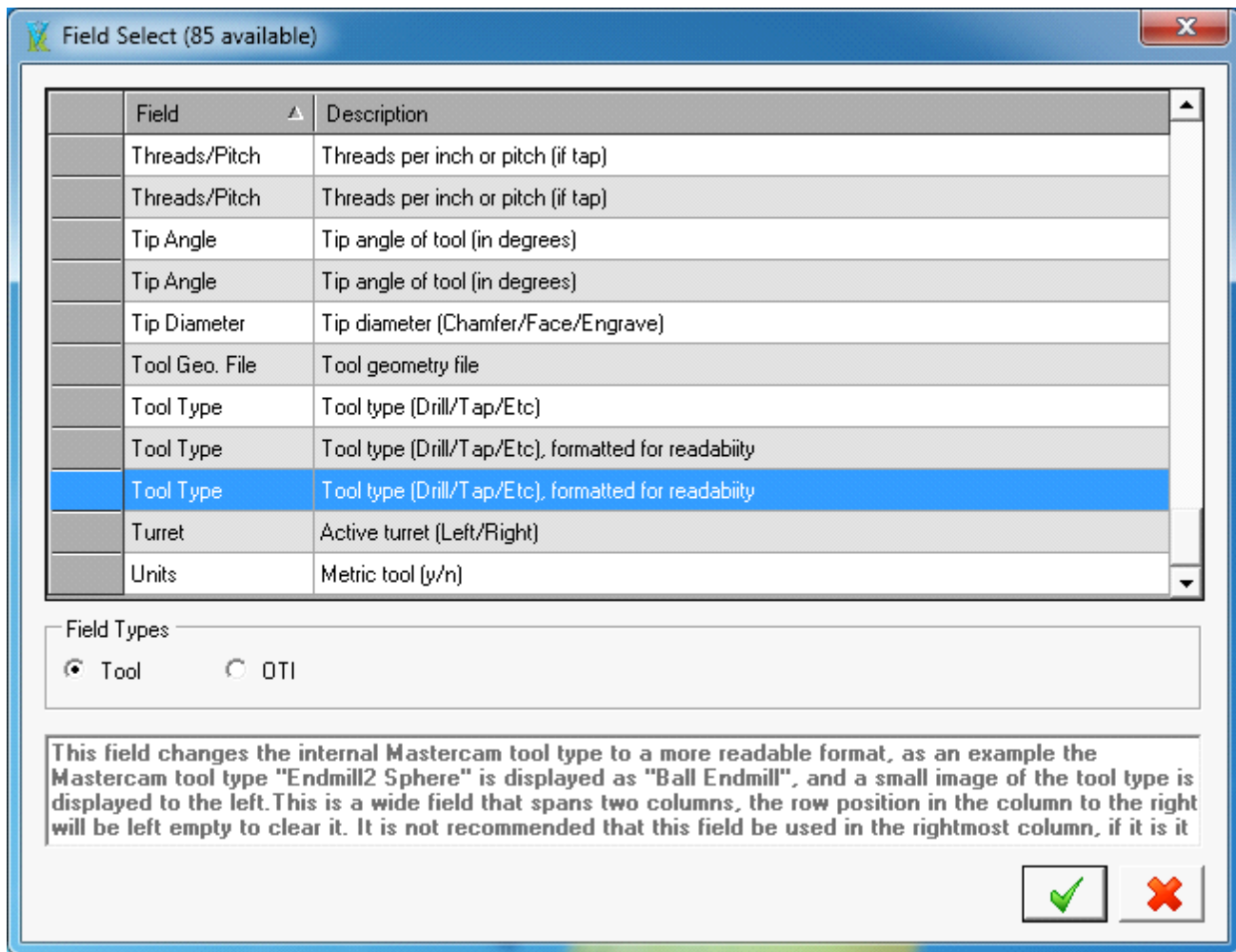
This screenshot shows the current configuration of displayed fields for the selected tool type, in this case a "Flat End Mill", used on a Mill machine:

Here is how these fields look on the report:

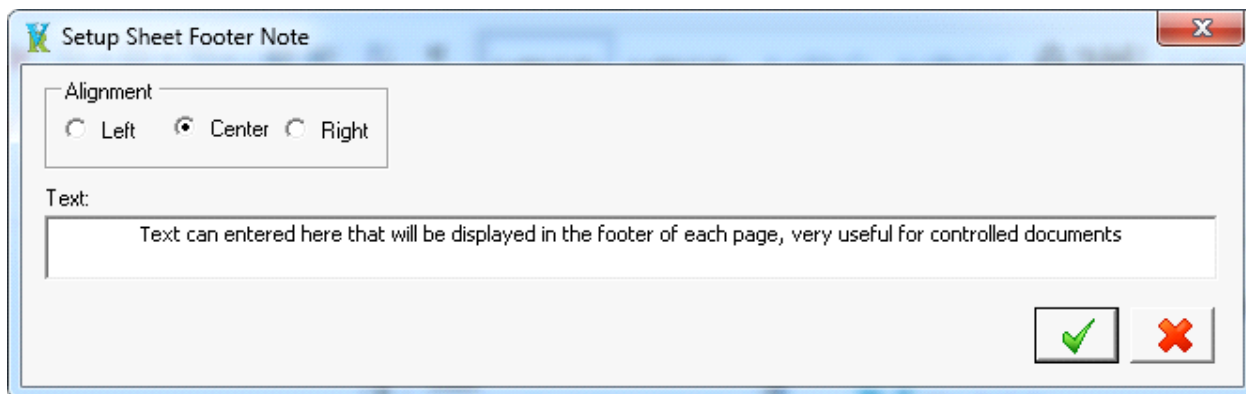
T1: Flat End Mill

 Tool Type: Flat Endmill	Coolant: Flood	
Mfg. Code:	Spindle Dir.: CW	
Name: Flat End Mill	RPM: 1555	
Asm. Name:	SFM: 407	
Aggregate: No	Feedrate: 0.01 inch/min	
Units: Inch	Feed/Tooth: 0.0000 inch/rev	
Holder Name: BLANK	Plunge Feed: 0.0 inch/min	
Holder Lng.: 1.25"	Retract Feed: 0.0 inch/min	
Lng. Offset: 0		
Dia. Offset: 0		
Material: Carbide		
Diameter: 1.0"		
Overall Lng.: 2.0"		
Shoulder Lng.: 1.2"		
Flute Lng.: 1.0"		
Flutes: 4		

Clicking on any of the buttons displays a dialog where a different field can be selected for display on the Tool List. All of the data from Mastercam that is available to be displayed can be selected. Only fields available in the version of Mastercam being used are available:



The "Tool List" dialog has an option for the user to set text to be displayed in the footer of each report page, and to align the text. This is very useful for shops that have controlled documents:



All of the settings from the Tool List dialog are saved.